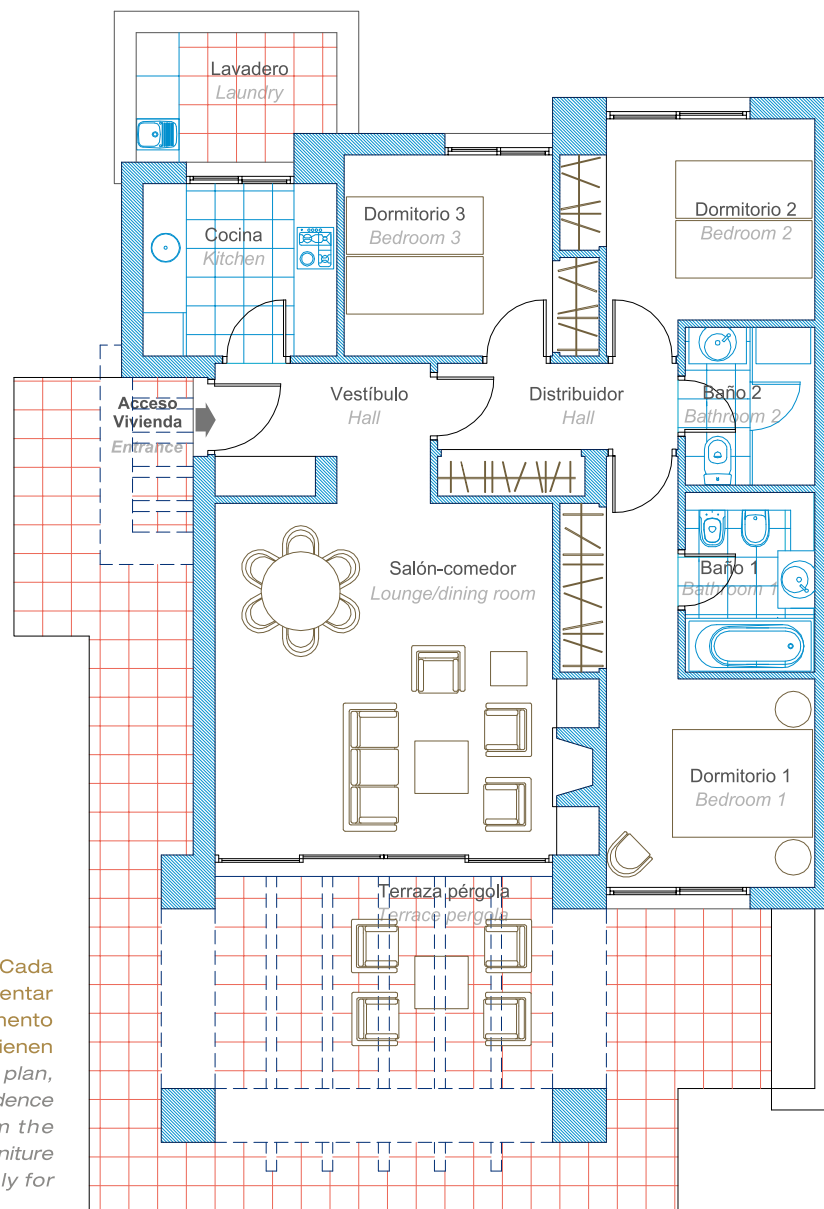


Villa Pareada Perdiz

Plano Tipo

Perdiz Semi-detached Villa

Standard Floor Plan



Superficies Aproximadas

Approximate Surface Areas

Superficie construida de vivienda <i>Built surface area of property</i>	98 m ²
Superficie de terraza, patio y porche <i>Surface area of terraces, patios and porches</i>	70 m ²
Superficie de parcela <i>Plot surface area</i>	300 m ²



Este es un plano tipo de la vivienda sin zonas comunes. Cada vivienda dispone de su propio plano que puede experimentar ligeras variaciones respecto al tipo. No constituye documento contractual. El mobiliario y menaje reflejados en el plano tienen carácter meramente decorativo. *This is a standard floor plan, which does not include the common use areas. Each residence has its own floor plan, which may vary slightly from the standard one. This is not a contractual document. The furniture and household items that appear in the plan are merely for decorative purposes.*

Tel. (+34) 965 32 42 24 • info@lascalinasgolf.es

unmundoaparte.com

aworldapart.es



LAS COLINAS
Golf & Country Club